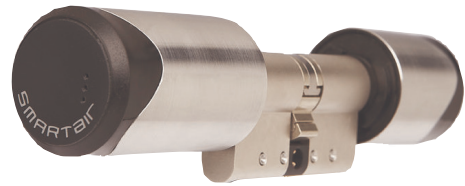


SMARTair Knob Cylinder



Function

The SMARTair Knob Cylinder is an easy-to-use, simple-to-install and highly effective electronic cylinder that can be integrated with other SMARTair locking elements – escutcheons, wall readers, e-motion – in one Access Control system managed by SMARTair Software.

The Knob Cylinder is upgradable from Standalone to Offline/Update-On-Card and/or Wireless, making it the perfect solution for both new and retrofit installations.

Mechanical features

- Freewheeling knob until an authorized credential is presented
- Motorized clutch activates cylinder cam
- Compatible with a mass variety of standard mortise locks (Euro, Scandinavian, Finnish and ANSI models are available)
- Panic function: Internal knob turning always opens door (only Euro model)
- Available Knob Cylinder models:
 - Euro: Double cylinder (electronic on one side or two sides); Half cylinder
 - Scandinavian: Double cylinder (electronic on one side or two sides); Half cylinder

Electronic features

- Reader module:
 - 13.56 MHz, MIFARE® or iClass technology
 - Contact-less cards/tags
 - Opening distance: 10mm with standard cards
 - Programming device connection located on the front section of the electronic knob
 - Indication light: Red & green LED
- Control Unit:
 - Non-volatile memory
 - Programmable in 3 modes:
 - Normal mode: 1,500 users and 600 audit trail entries
 - Extended mode: 1,000 users and 1,000 audit trail entries
 - High traffic: All users of the installation have access and 1,000 audit trail entries
 - Real-time clock and calendar: 14 time profiles
- RF module (Wireless):
 - 868 MHz bi-directional radiofrequency technology
 - Serves to send updates from the hub to the control unit, and to send audit trail from the control unit to the hub
 - Encrypted communication
 - Distance between the RF module and the hub: 25m
- Battery module:
 - 1 x CR123A Lithium battery
 - Estimated battery life: 40,000 cycles; 2 years in standby (for the wireless model: 1-2 years in standby)
 - Simple battery change; no dismounting required

Specifications

- 85% humidity without condensation
- Temperature range: from 0°C to 70°C
- IP55 (extreme model)